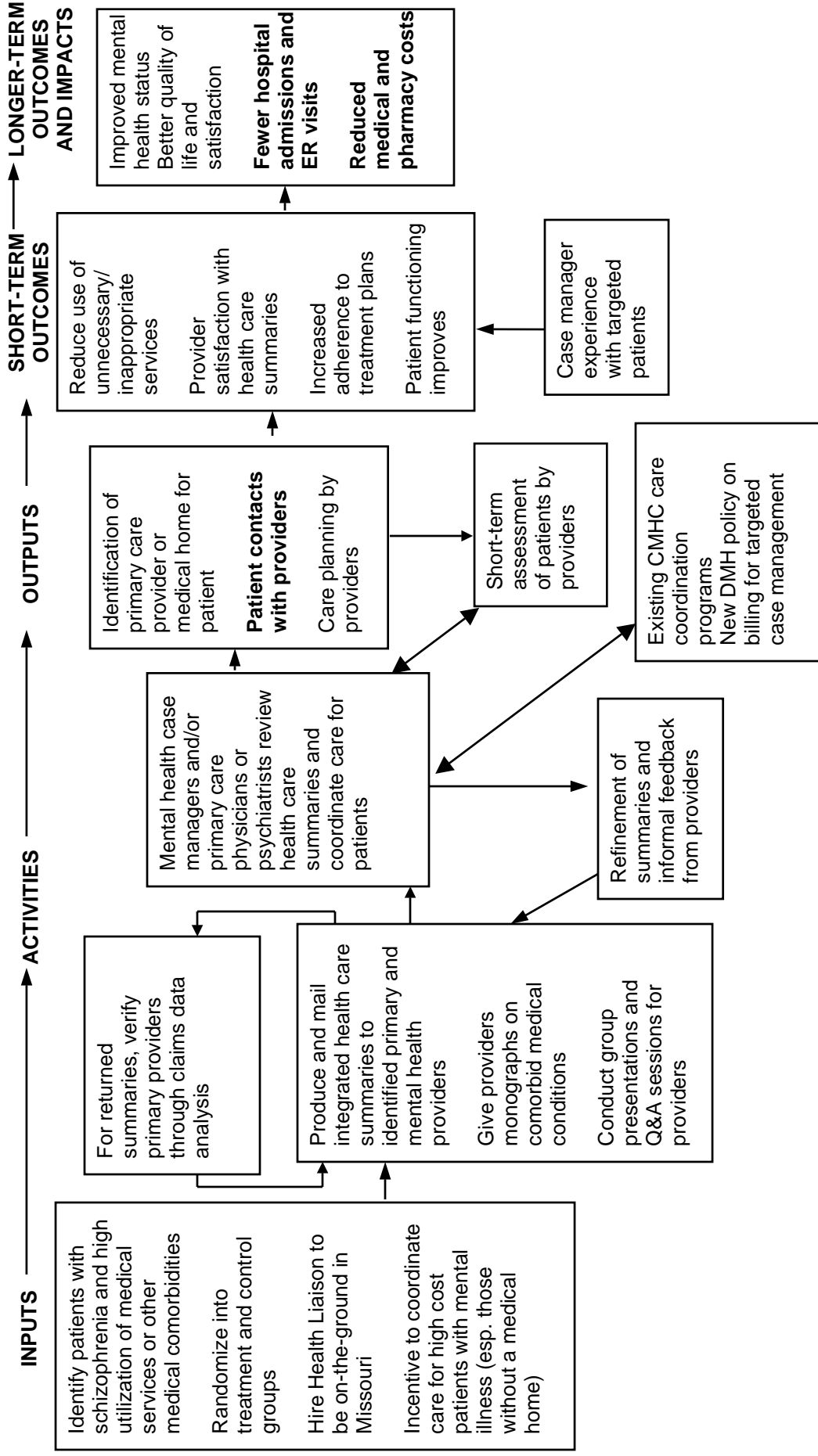


LOGIC MODEL FOR THE COMPREHENSIVE NEUROSCIENCE MEDICAL RISK MANAGEMENT INTERVENTION*



Note: **Bold** indicates reported process and outcome measures.

*Taken from the Comprehensive Neuroscience Case Study in Esposito, D., E. Taylor, K. Andrews, and M. Gold. "Evaluation of the Medicaid Value Program: Health Supports for Consumers with Chronic Conditions." Princeton, NJ: Mathematica Policy Research, Inc., August 2007.