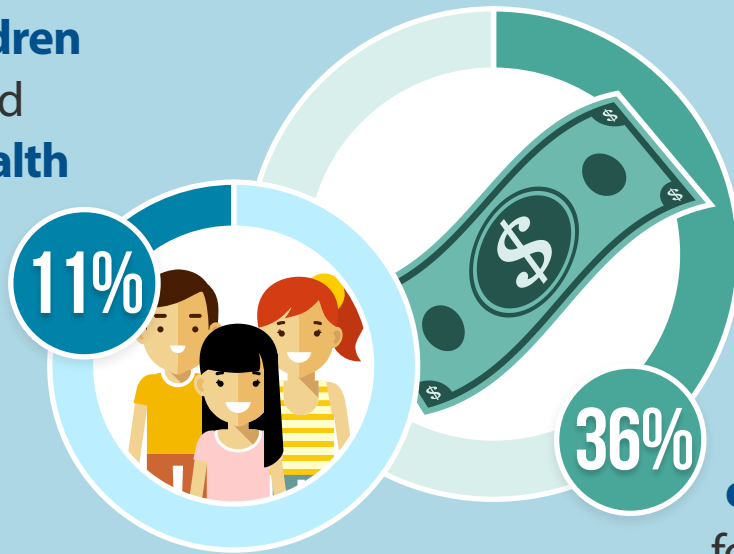


# FACES OF MEDICAID: CHILDREN'S BEHAVIORAL HEALTH CARE UTILIZATION & COSTS

About **1-in-10 children** covered by Medicaid use behavioral health care services ...



...and they account for **over 1/3 of total costs** for children in Medicaid

These children have **mean expenditures 4x higher** than kids in Medicaid who only use physical health care

**\$2,492**

Children using only physical health services

**\$10,259**

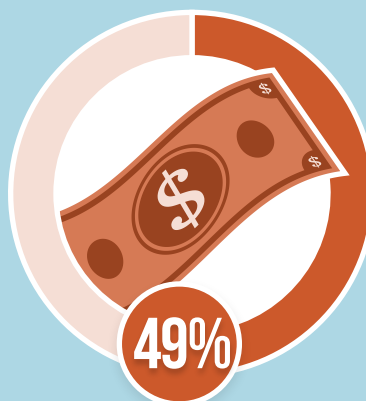
Children using both physical and behavioral health services

Kids covered by **foster care** and **SSI/disability** account for...

Over 1/4 of behavioral health care service use



Half of total behavioral health care costs



Only a small portion of children in Medicaid

