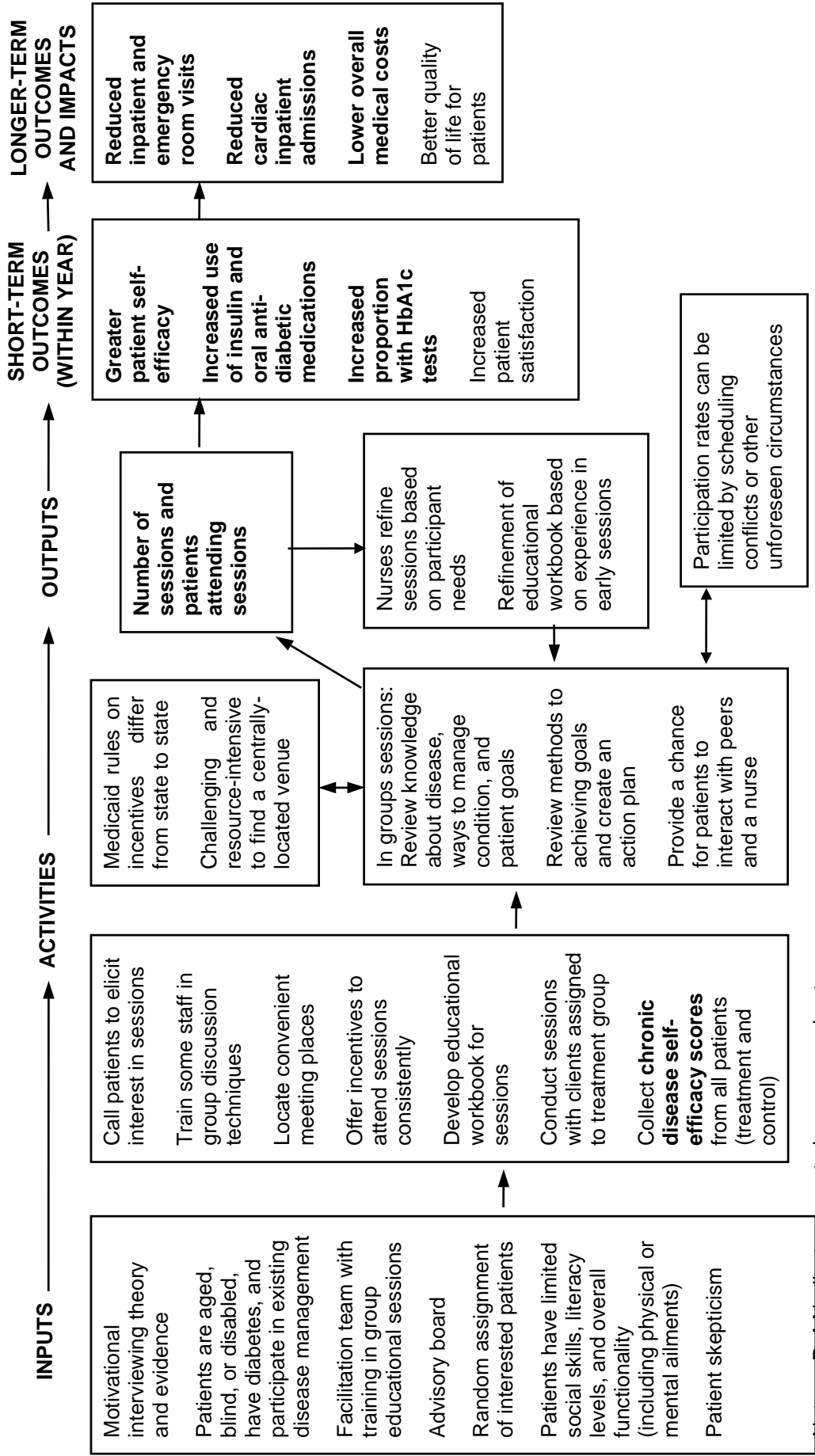


LOGIC MODEL FOR MCKESSON'S DIABETES GROUP EDUCATION INTERVENTION*



Note: **Bold** indicates reported process and outcome measures.

*Taken from the McKesson Health Solutions Case Study in Esposito, D., E. Taylor, K. Andrews, and M. Gold. "Evaluation of the Medicaid Value Program: Health Supports for Consumers with Chronic Conditions." Princeton, NJ: Mathematica Policy Research, Inc., August 2007.